



Hey Coyotes!  
Mr. Hartwick here!  
Welcome to my intermediate music pages!

Have fun exploring these  
'at home' music activities  
for students in  
Grades 3/4 to 4/5!

**Pages 1 to 13** is a large set of "**Staff Lessons**" for students in grades 3 to 5! Students in grade 3, please do your best to complete the first three pages. Students in grade 4, please do your best to complete the first four pages. Students in grade 5, please do your best to complete the first five pages. If you want to work beyond these suggested pages - **GO FOR IT!**

**Pages 14 to 17** is an instruction guide for **FREE** access to **Musicplayonline**. Ask your parents for permission before going online. Have fun exploring the games! I'm sure you'll remember many of them from our music classes at Selkirk.

If you have access to the Internet, please visit my **NEW** website - **Coyotes & Creators Music Factory** - <https://cacmf.weebly.com>. This site features a growing collection of 'at home' music learning opportunities! Check out the lessons, links, songs, and dances - **UPDATED WEEKLY!** If you don't have access to the Internet, no worries! Here's some other fun things to do:

- Ask your family about their favourite songs. Listen to them and keep a steady beat for the **WHOLE SONG!**
- Make up a song (or a rap) about your pet - and perform it for your pet!
- Dance every day (to songs on the radio, or from your memory)!
- Clap! Stomp! Sing! Dance! Play! Try to make some music every day!

Your next set of music pages will be distributed on Monday, May 25th. If you have any questions (or if you just want to say hi), you can email me.

[Grant.Hartwick@yesnet.yk.ca](mailto:Grant.Hartwick@yesnet.yk.ca)

# STAFF LESSON: DRAW A STAFF

Name: \_\_\_\_\_ Grade: \_\_\_\_\_

**To do:** Draw lines between the dots to make a five line staff. Make sure to draw a line through the dots at the end to make it a musical staff!

5 ●	●
4 ●	●
3 ●	●
2 ●	●
1 ●	●

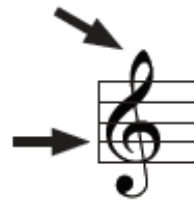
**To do:** Draw lines between the dots to make a five line staff. Number the lines from low to high.

— ●	●
— ●	●
— ●	●
— ●	●
— ●	●

# STAFF LESSON: THE TREBLE CLEF

Name: \_\_\_\_\_ Grade: \_\_\_\_\_

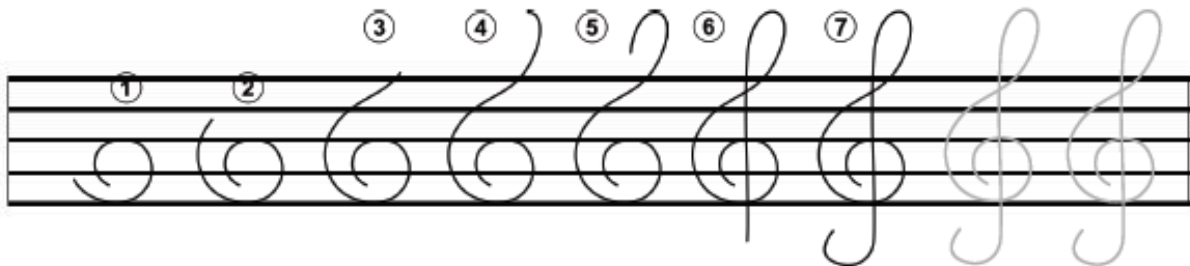
A clef is given as the beginning of each staff. The treble clef circles the note G.



Drawing a treble clef is fun!

**To do:** On the staff below, follow the steps to draw your own clef! Don't forget to trace the last two clefs on the first staff!

Trace the last two!



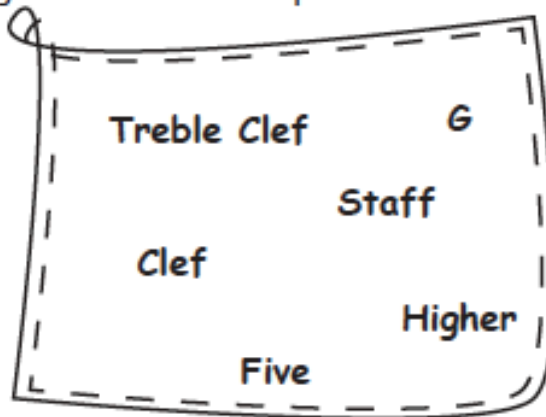
**To do:** On the staff below, trace the treble clefs provided, then try drawing five of your own using the steps above.



# STAFF LESSON: FILL IN THE BLANKS

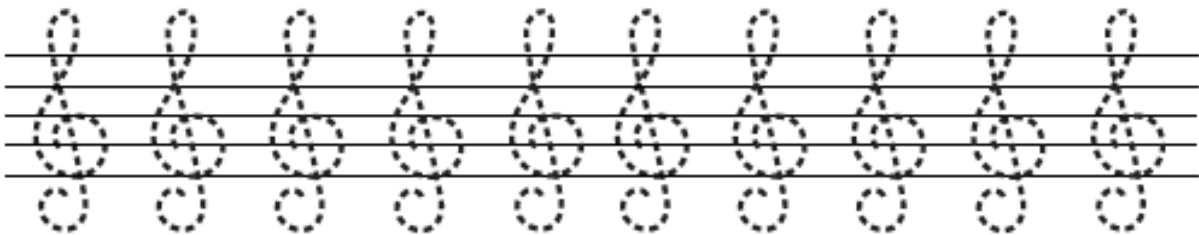
Name: \_\_\_\_\_ Grade: \_\_\_\_\_

To do: Choose the right word from the shape below to fill in the answers.



1. Music is written on a \_\_\_\_\_.
2. A \_\_\_\_\_ has \_\_\_\_\_ lines.
3. A \_\_\_\_\_ is given at the beginning of each \_\_\_\_\_.
4. The treble clef circles the note \_\_\_\_\_.
5. The \_\_\_\_\_ is used for \_\_\_\_\_ notes.

Let's Practice Some More!



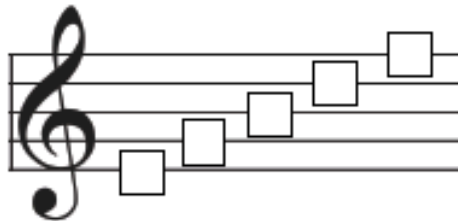
# STAFF LESSON: LINES ON A STAFF

Name: \_\_\_\_\_ Grade: \_\_\_\_\_

The lines are numbered from the bottom to the top.



To do: Write the correct line number for each line.



To do: Name the correct line the note is on.

Line \_\_\_

Line \_\_\_

Line \_\_\_

Line \_\_\_

Line \_\_\_

Line \_\_\_

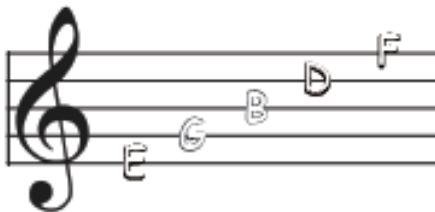
Line \_\_\_

Line \_\_\_

# STAFF LESSON: NAME THE NOTES ON THE LINES

Name: \_\_\_\_\_ Grade: \_\_\_\_\_

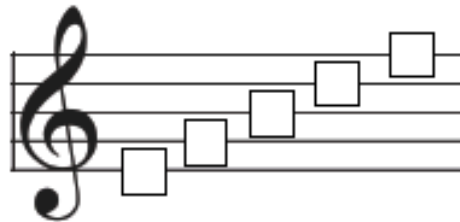
The notes on the lines are E, G, B, D, F.  
You can remember the notes on the lines with this saying:  
**Every Good Boy Deserves Fudge**



Can you make up your own saying?

- 5. F \_\_\_\_\_
- 4. D \_\_\_\_\_
- 3. B \_\_\_\_\_
- 2. G \_\_\_\_\_
- 1. E \_\_\_\_\_

To do: Write the correct note name for each line.



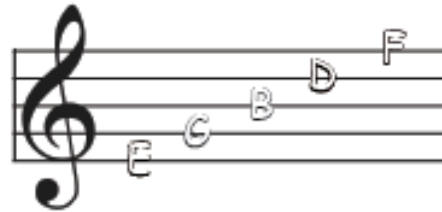
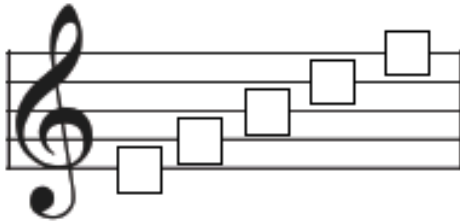
To do: Name the correct note on the line.



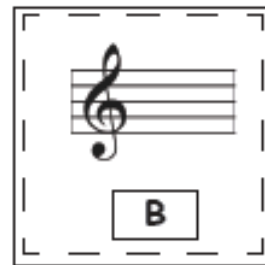
# STAFF LESSON: DRAW THE NOTES ON THE LINES

Name: \_\_\_\_\_ Grade: \_\_\_\_\_

To do: Name the note on each line



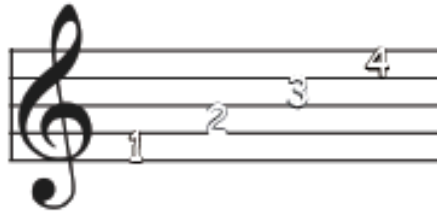
To do: Draw the note on the correct line.



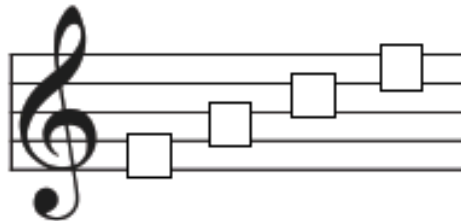
# STAFF LESSON: SPACES ON A STAFF

Name: \_\_\_\_\_ Grade: \_\_\_\_\_

The spaces are numbered from the bottom to the top.



To do: Write the correct number for each space.



To do: Name the correct space the note is in.

Space \_\_\_\_

Space \_\_\_\_

Space \_\_\_\_

Space \_\_\_\_

Space \_\_\_\_

Space \_\_\_\_

Space \_\_\_\_

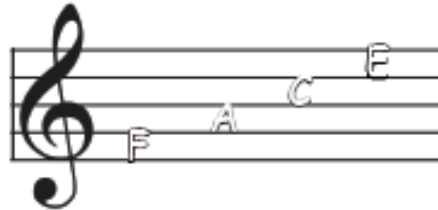
Space \_\_\_\_



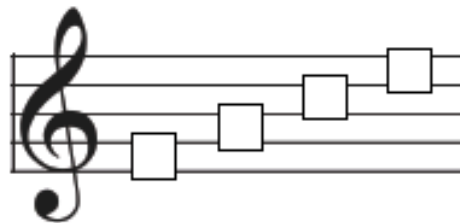
# STAFF LESSON: NAME THE NOTES IN THE SPACES

Name: \_\_\_\_\_ Grade: \_\_\_\_\_

The notes on the lines are F, A, C, E. Use this poem to help you remember the names of the notes in spaces: The notes in the space, spell your FACE.



To do: Write the correct note name for each space.



To do: Name the correct note on the space.

A musical staff with a treble clef. A single note is placed on the first space (between the first and second lines). Below the staff is a rectangular box for writing the note name.

\_\_\_\_\_

A musical staff with a treble clef. A single note is placed on the second space (between the second and third lines). Below the staff is a rectangular box for writing the note name.

\_\_\_\_\_

A musical staff with a treble clef. A single note is placed on the third space (between the third and fourth lines). Below the staff is a rectangular box for writing the note name.

\_\_\_\_\_

A musical staff with a treble clef. A single note is placed on the fourth space (between the fourth and fifth lines). Below the staff is a rectangular box for writing the note name.

\_\_\_\_\_

A musical staff with a treble clef. A single note is placed on the first space (between the first and second lines). Below the staff is a rectangular box for writing the note name.

\_\_\_\_\_

A musical staff with a treble clef. A single note is placed on the second space (between the second and third lines). Below the staff is a rectangular box for writing the note name.

\_\_\_\_\_

A musical staff with a treble clef. A single note is placed on the third space (between the third and fourth lines). Below the staff is a rectangular box for writing the note name.

\_\_\_\_\_

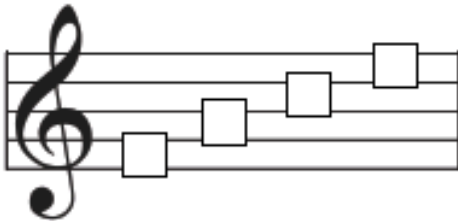
A musical staff with a treble clef. A single note is placed on the fourth space (between the fourth and fifth lines). Below the staff is a rectangular box for writing the note name.

\_\_\_\_\_

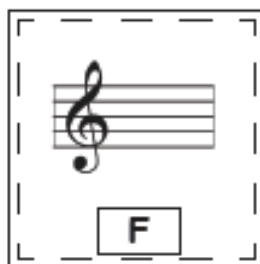
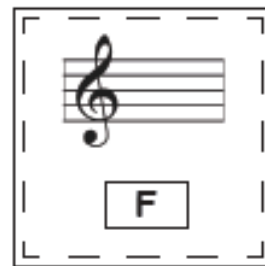
# STAFF LESSON: DRAW THE NOTES IN THE SPACES

Name: \_\_\_\_\_ Grade: \_\_\_\_\_

To do: Name the notes in each space.



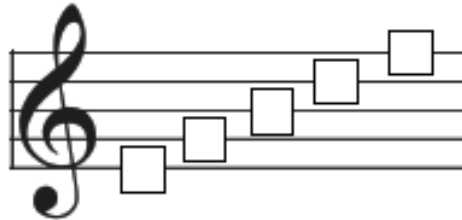
To do: Draw the note in the correct space.



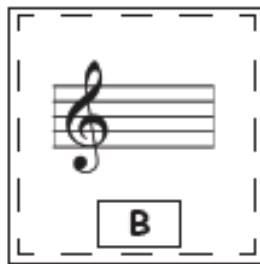
# MORE PRACTICE: NOTES ON THE LINES

Name: \_\_\_\_\_ Grade: \_\_\_\_\_

To do: Write the correct note name for each line.



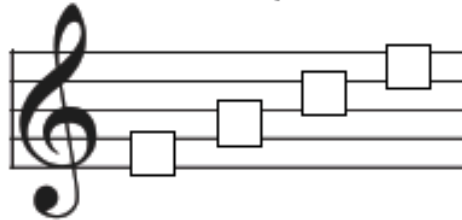
To do: Draw the note on the correct line.



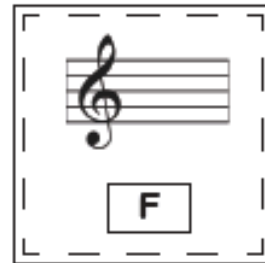
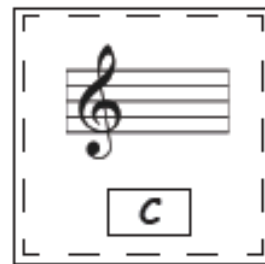
# MORE PRACTICE: NOTES IN THE SPACES

Name: \_\_\_\_\_ Grade: \_\_\_\_\_

To do: Write the correct note name for each space.



To do: Draw the note in the correct space



# MORE PRACTICE: NAME THE NOTES ON THE STAFF

Name: \_\_\_\_\_ Grade: \_\_\_\_\_

To do: Name the notes on the staff.

\_\_\_\_\_

\_\_\_\_\_

\_\_\_\_\_

\_\_\_\_\_

\_\_\_\_\_

\_\_\_\_\_

\_\_\_\_\_

\_\_\_\_\_

\_\_\_\_\_

\_\_\_\_\_

\_\_\_\_\_

\_\_\_\_\_

\_\_\_\_\_

\_\_\_\_\_

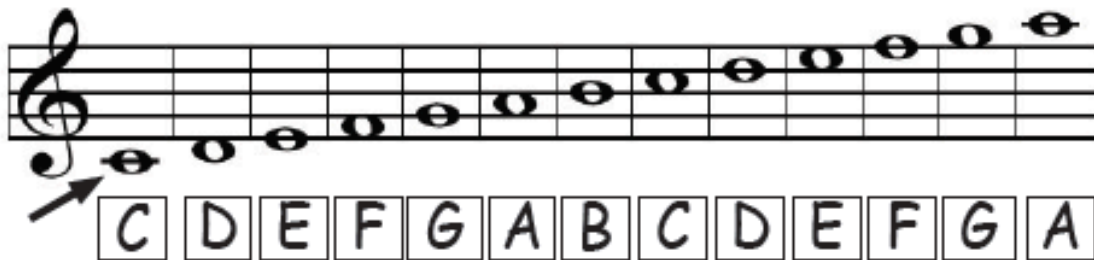
\_\_\_\_\_

\_\_\_\_\_

# STAFF LESSON: LEDGER LINES

Name: \_\_\_\_\_ Grade: \_\_\_\_\_

Notes that are too high or too low to fit on the staff use ledger lines.



A musical staff with a treble clef. The notes are: C (below the bottom ledger line), D (below the bottom ledger line), E (below the bottom ledger line), F (below the bottom ledger line), G (below the bottom ledger line), A (below the bottom ledger line), B (below the bottom ledger line), C (below the bottom ledger line), D (below the bottom ledger line), E (below the bottom ledger line), F (below the bottom ledger line), G (below the bottom ledger line), A (below the bottom ledger line). Below the staff is a letter key signature: C D E F G A B C D E F G A. An arrow points to the first note (C) and another arrow points to the last note (A).

To do: Draw a treble clef and practice writing notes with ledger lines (C and A).



A blank musical staff with a treble clef. A note is drawn on the bottom ledger line. Below the staff is a note on the bottom ledger line.

To do: Name the notes on the staff.



A musical staff with a treble clef and a note on the bottom ledger line. Below the staff is a blank box for labeling.



A musical staff with a treble clef and a note on the bottom ledger line. Below the staff is a blank box for labeling.



A musical staff with a treble clef and a note on the bottom ledger line. Below the staff is a blank box for labeling.



A musical staff with a treble clef and a note on the bottom ledger line. Below the staff is a blank box for labeling.



A musical staff with a treble clef and a note on the bottom ledger line. Below the staff is a blank box for labeling.



A musical staff with a treble clef and a note on the bottom ledger line. Below the staff is a blank box for labeling.



A musical staff with a treble clef and a note on the bottom ledger line. Below the staff is a blank box for labeling.



A musical staff with a treble clef and a note on the bottom ledger line. Below the staff is a blank box for labeling.

## Musicplayonline Online Lessons for your PreK-Gr. 6 Students

During the Coronavirus outbreak, Musicplayonline is giving students increased access to areas of Musicplayonline, and is FREE for all students.

Students:

1. Go to:

[www.musicplayonline.com](http://www.musicplayonline.com)

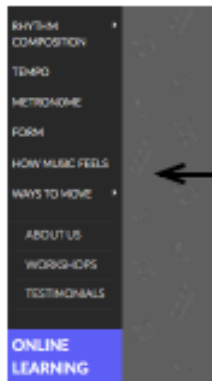
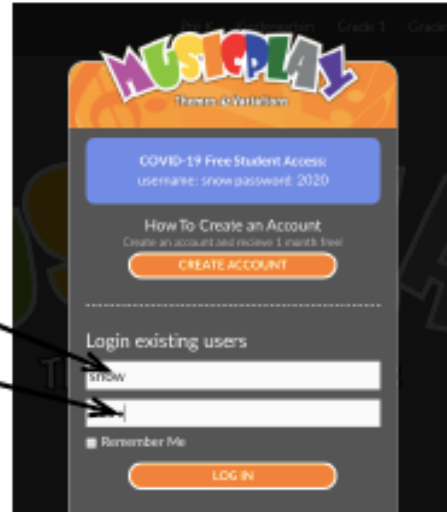
2. When you see this login window, type in the word **snow** in the top white bar.

3. Type the numbers **2020** in the bottom white bar.

4. Then press Log In.

You do NOT create an account.

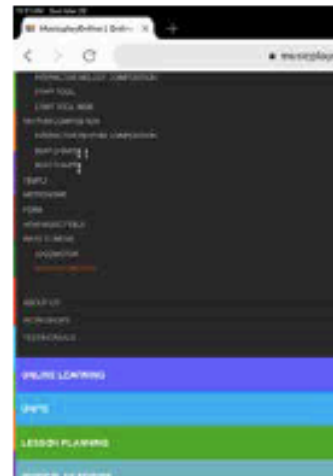
Creating an account is just for teachers!



Look for the blue ONLINE LEARNING button.

It will appear on the left menu on a computer.

On a tablet or a phone, scroll down.



Click to open Online Learning and select your grade.

On the left is an introduction to the lesson, a video introduction or notes about eLearning.



On the right side are printable resources - if you don't have a printer at home that's OK - you'll just write out what's needed on blank paper.

The I Can statements tell what you'll learn in the lesson.

*Note for Teachers: These lessons are standards based. They are being linked to the core arts national standards, and the lesson pdfs will be available in the lesson planning section for teachers reference.*

On the left side are your instructions.



On the right side are videos, games, pictures to read or interactive activities to do. Just click and follow the directions.

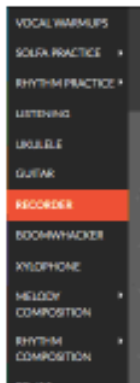
At the end of the lesson are **assessments**. You should do the assessment that your teacher assigns.



There may be some **EXTRAS** at the end of the lesson. These are for fun!

And explore the rest of the website. There are 1000+ fun songs, lots of games, Recorder, Ukulele and Guitar sections!

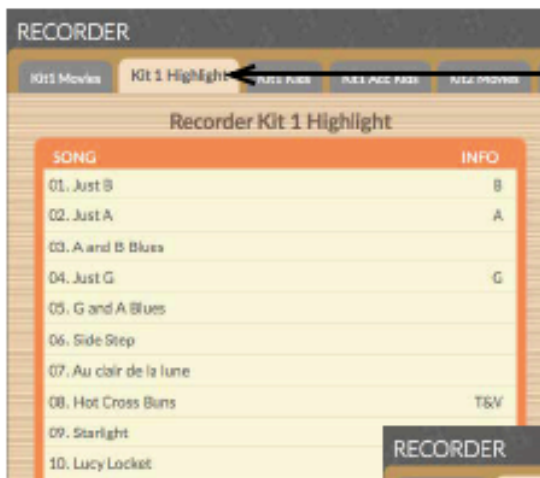




If you play Recorder, Ukulele or Guitar, you can keep practicing your instrument at home.

And this might be a great time to learn to play guitar or ukulele!

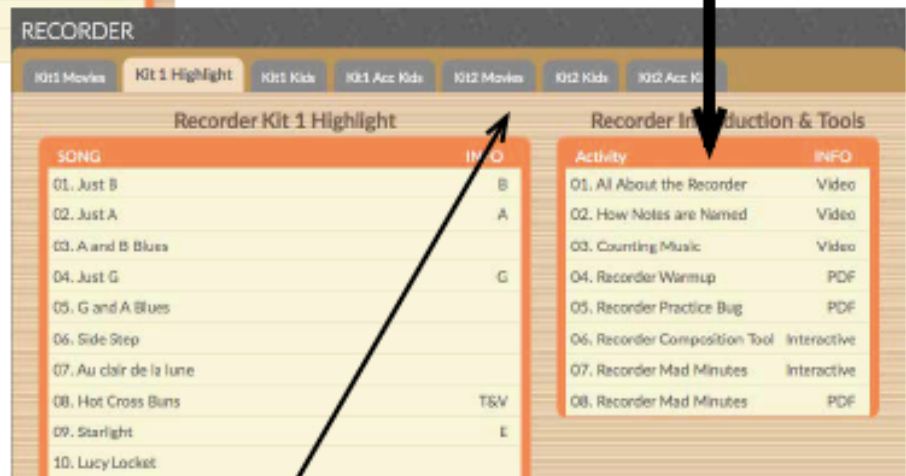
These sections are on the left menu of your computer. Scroll down on a tablet to see this menu.



If you've played a little recorder, choose **Kit 1 Highlights**. Then you can start playing along with videos of easy recorder songs and the notes that you're supposed to play will be highlighted.

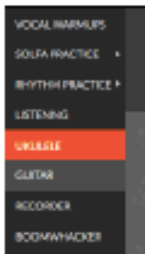
If you're brand new to the recorder, start with the Recorder Introduction. Watch the first 3 videos.

MORE recorder videos to help you learn to play are coming!



If you play recorder well, try the songs in Kit 2. There are two parts for soprano recorder in each song. If you have 2 recorders at home, you can play duets!



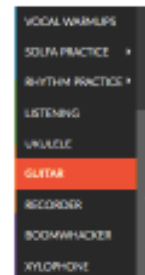
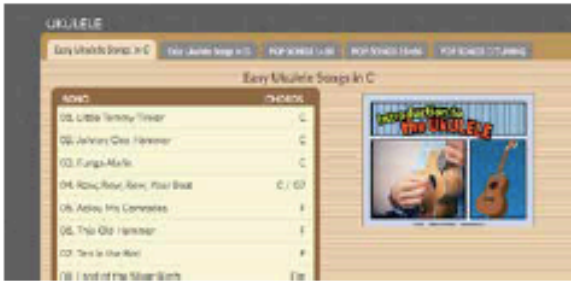


The Ukulele section is also on the left menu.

To learn the ukulele, start by watching the Introduction to the Ukulele.

Then start playing and singing songs. The first songs use just the C chord, so play and sing!

There's a tab that says POP SONGS 1-30. Try some pop songs too!

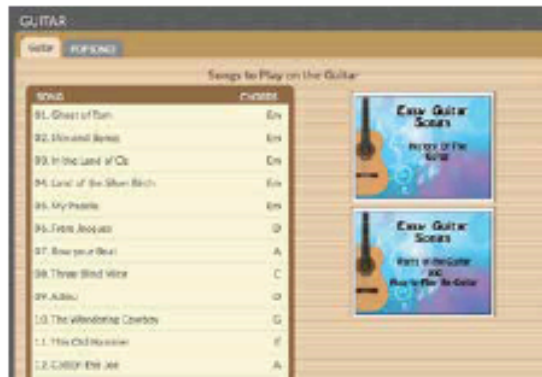


The Guitar section is also on the left menu.

To learn to play the guitar, start by watching the introduction videos.

Then start playing and singing songs. The first songs use just one chord, so play and sing!

There's a tab that says POP SONGS. Try some pop songs too!



The team at Musicplayonline is working hard building more modules for you to keep making music at home! Have fun, and keep singing, playing and creating music while you're learning at home!

Dentse Gagne, creator of Musicplayonline